



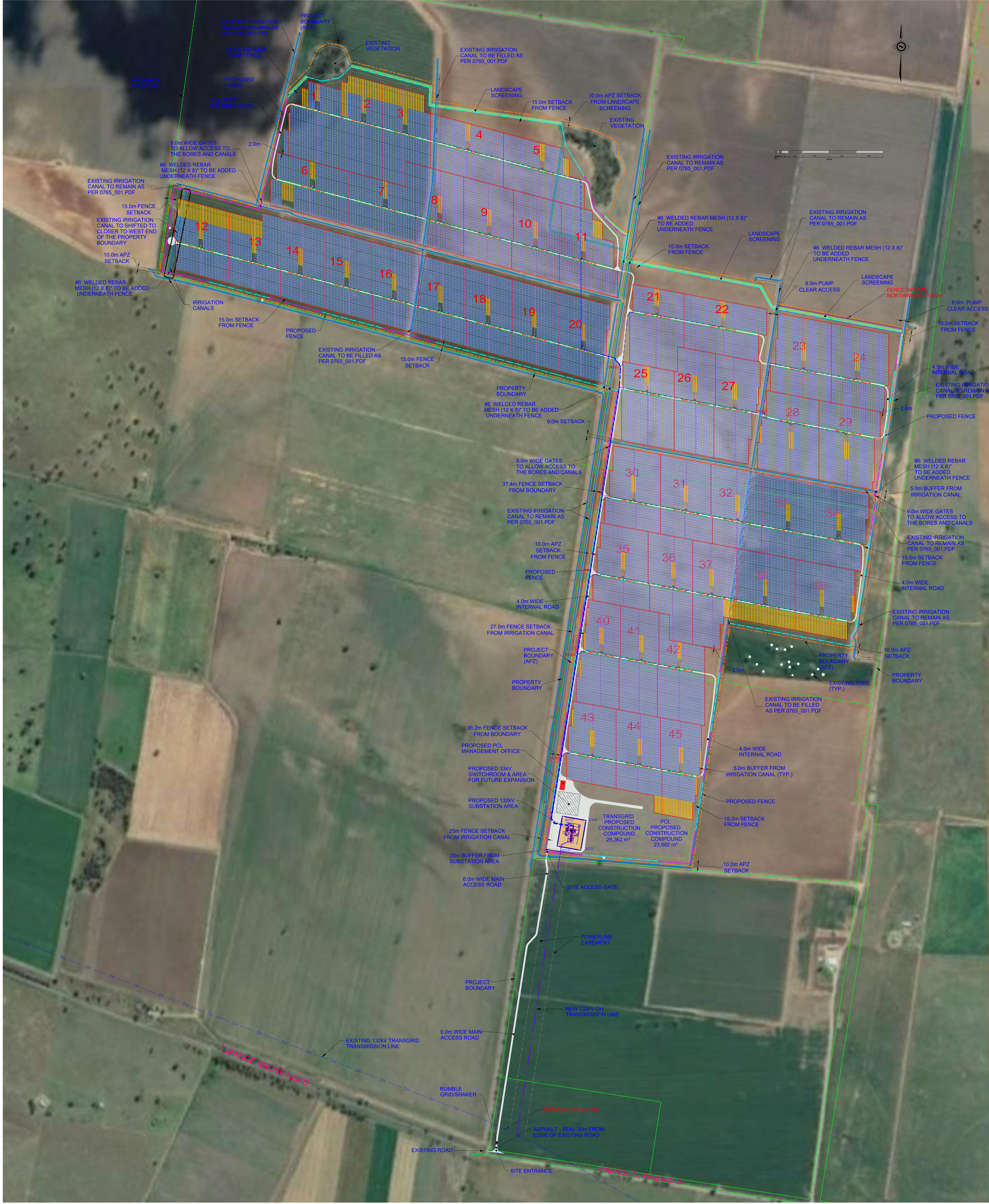
CONSTRUCTION LEADERS

TORONTO DISTRICT
2201 Bristol Circle, Suite 500
Oakville, Ontario, L6H 0J8
Phone: 905-276-7600

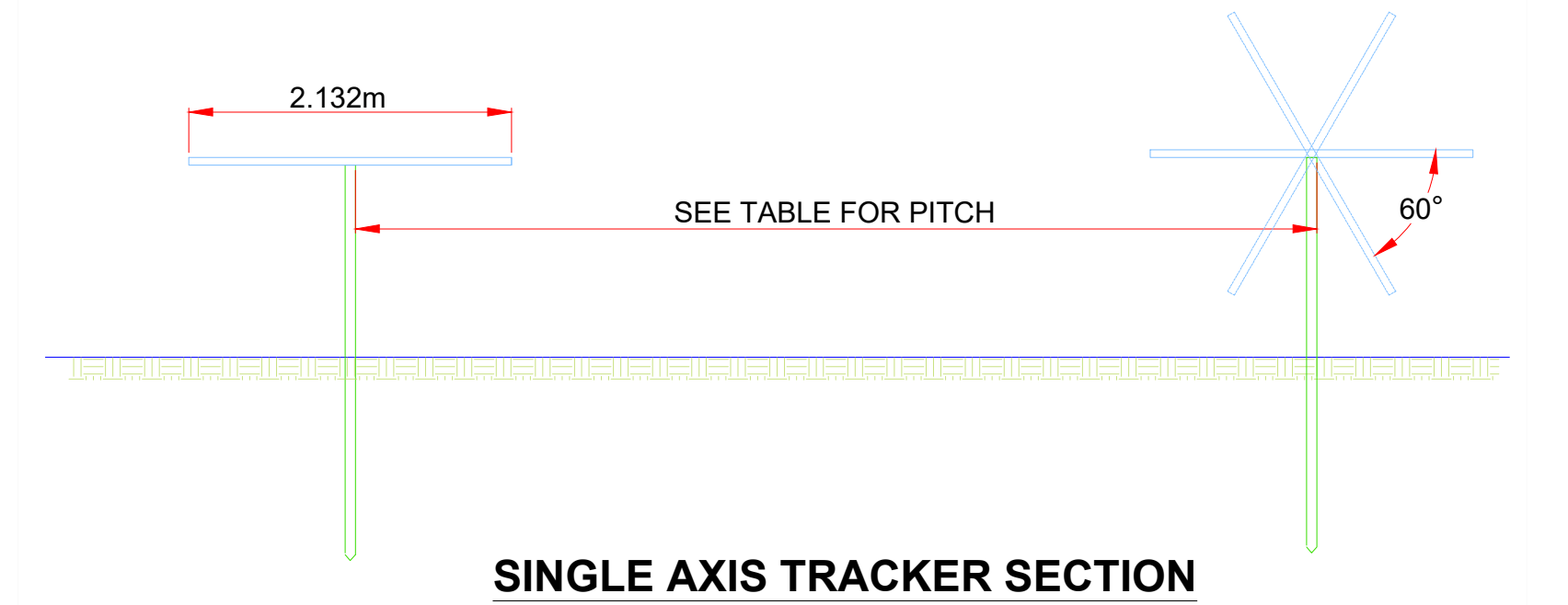
LEGEND

- (1x84) OR (1x56) MODULES (PORTRAIT) PER SAT
28 PV MODULES PER STRING
3 STRINGS = ±92.58m
2 STRINGS = ±62.28m
- 2 x 1.60 MVA INVERTER STATION - 3.20 MVA TRANSFORMER
COMBINER BOX
CONVENTIONAL SECURITY FENCE
DROP-DOWN FENCE
33 kV AC COLLECTOR LINE
DC TRENCH
DC PV HARNESS IN UG PVC CONDUIT
BLOCK OUTLINE
APZ BOUNDARY
PROPOSED GRAVEL ROAD

Table with 12 columns: Maximum Capacity @ POI (MW), Ingecon Sun 1600TL B615 (1598 KVA @ 30° C) MVA, Ingecon Sun 1600TL B615 Actual Rating @ 50° C, pf=1, MW, Panel Rating CS BiKu (W), # of Modules, DC MW, Effective DC/AC Ratio, # Of Modules/String, # Of Strings/Block, 3 Strings Tracker, 2 Strings Tracker, Pitch Distance (m). Includes a summary table at the bottom with rows for 430W, 435W, and 440W.



- 34.5kV COLLECTOR LINE
FEEDER 1, BLOCKS ((1/2-3/4-5/6-7/8-9/10)&(43/44-41/42)-DBJB1-SST)
FEEDER 2, BLOCKS ((11/12-13/14-15/16-17/18-19/20-21/22-23/24-25/26)-SST)
FEEDER 3, BLOCKS ((23/24-25/26-27/28-29/30-31/32-33/34-35/36-37/38)-SST)
FEEDER 4, BLOCKS ((47/48-45/46)&(57/58-55/56)-DBJB2-53/54-51/52-49/50-SST)
FEEDER 5, BLOCKS ((67/68-65/66-63/64-61/62-59/60)&(83/84-81/82-79/80)-DBJB3-SST)
FEEDER 6, BLOCKS ((77/78-75/76-73/74-71/72-69/70)&(89/90-87/88-85/86)-DBJB4-SST)



THIS DRAWING IS FOR THE SOLE USE OF ANY PCL OPERATING COMPANY, OR ANY PCL JOINT VENTURE COMPANY. IT IS NOT TO BE USED, ALTERED OR REPRODUCED WITHOUT THE WRITTEN PERMISSION OF THE PCL FAMILY OF COMPANIES.

Revision table with columns: Rev. No., Init., Date, Description. Includes entries for revised modules wattage, AC collectors, and substation location.

Plot Scale: AS SHOWN Date: Jun. 25, 2020
Drawn By: L.S. Checked By: W.S.

Sheet Title: Gunnedah Solar 1P SAT Option I Site Layout Plan

PCL Job No.: Sheet No.: PCL-1A